

entrada[®]

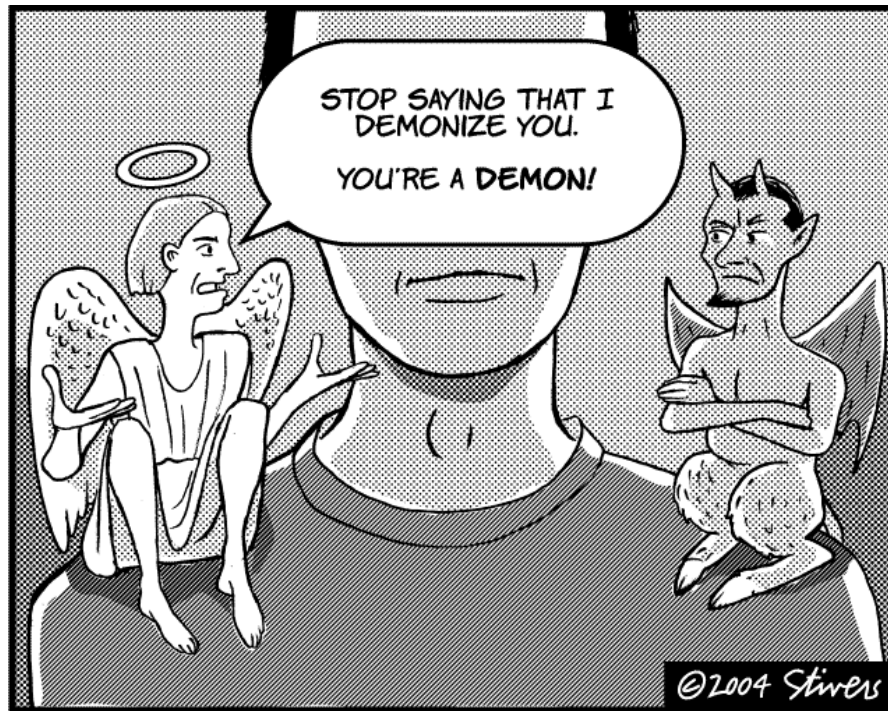


GUE, quem é ?

Ricardo Constantino
ricardo@entrada.tv



???



© Original Artist
Reproduction rights obtainable from
www.CartoonStock.com

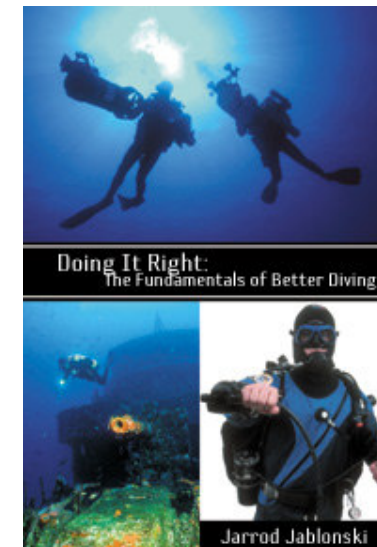
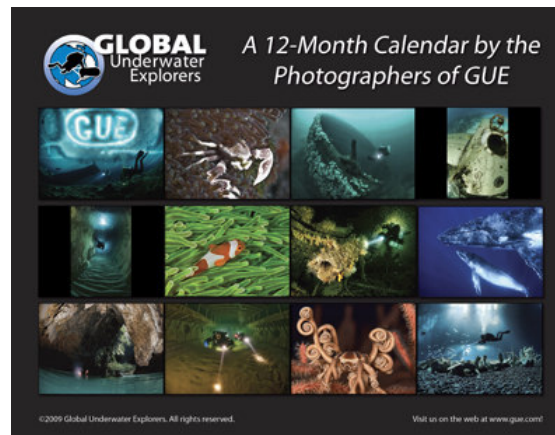


search ID: jcc00044



Agenda

- ▼ Uma introdução
- ▼ Video
- ▼ Missão :
 - Educação
 - Exploração
 - Conservação
- ▼ GUE em Portugal
- ▼ Debate



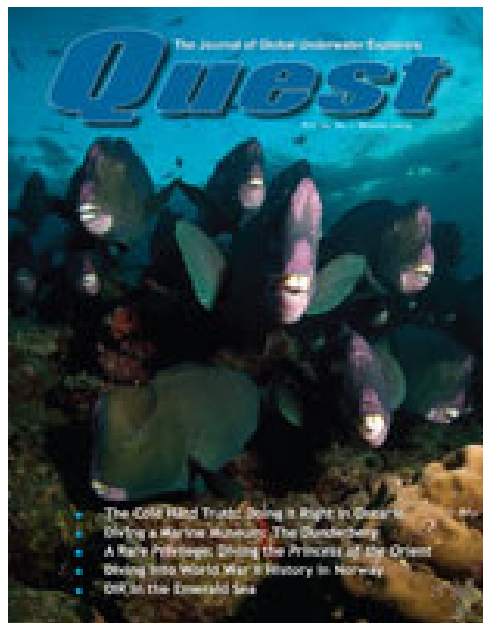


What GUE Has Always Been About



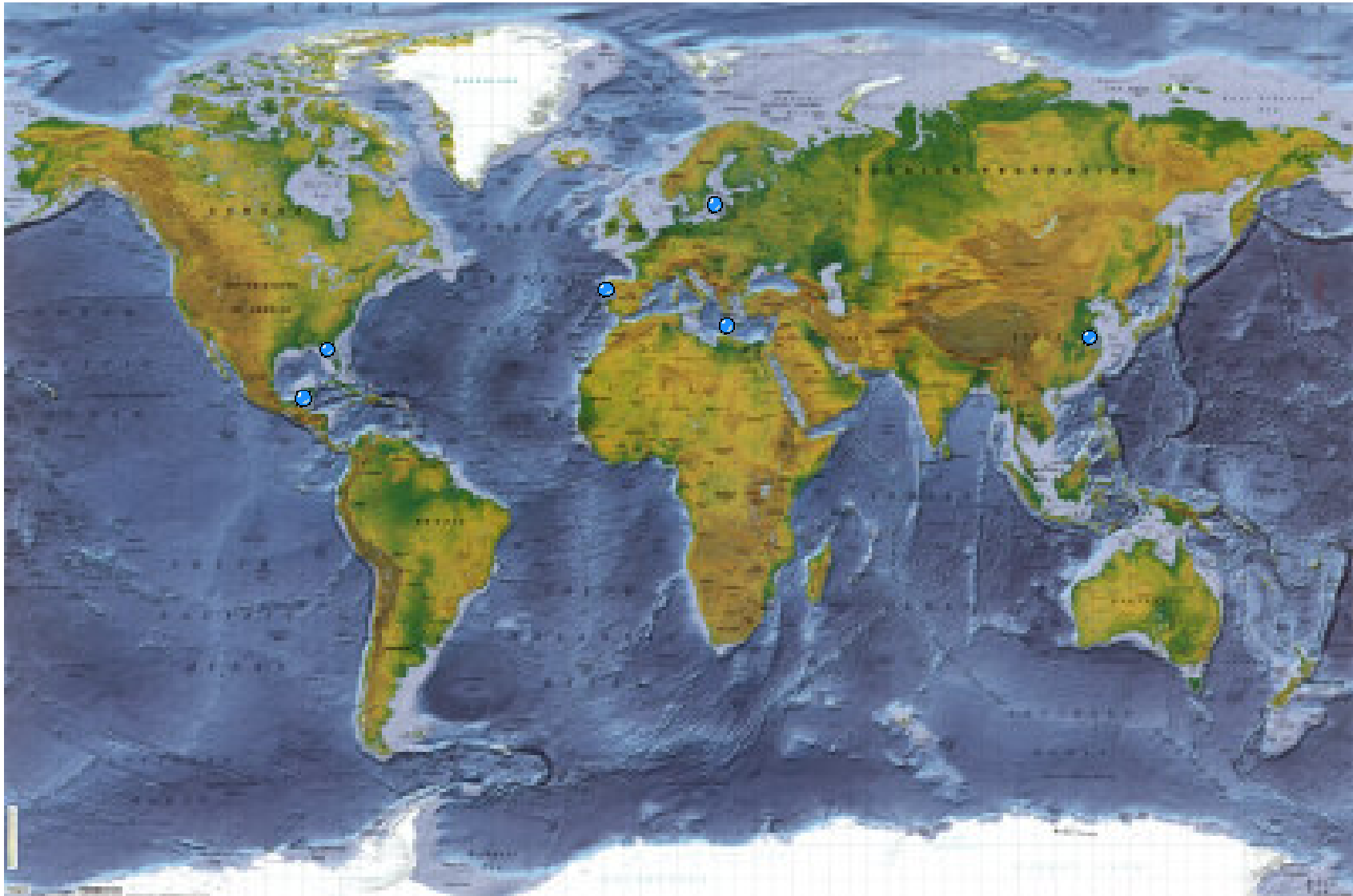
Missão

Global Underwater Explorers was founded to improve the quality of aquatic education and to actively engage in the exploration and conservation of the underwater world. It was founded by conservationists, explorers, and educators with a desire to share the mystery of the underwater world.



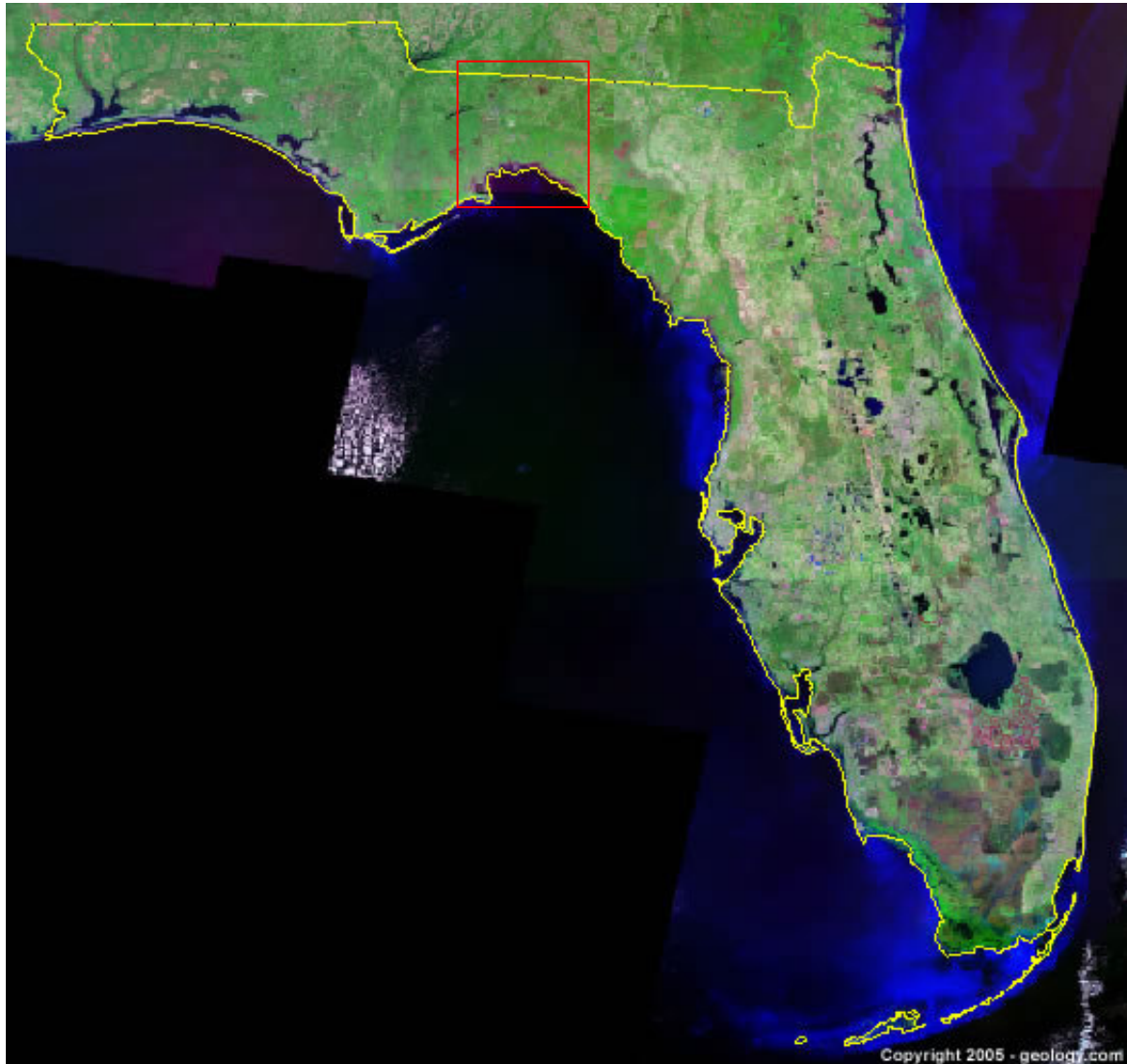


Exploração



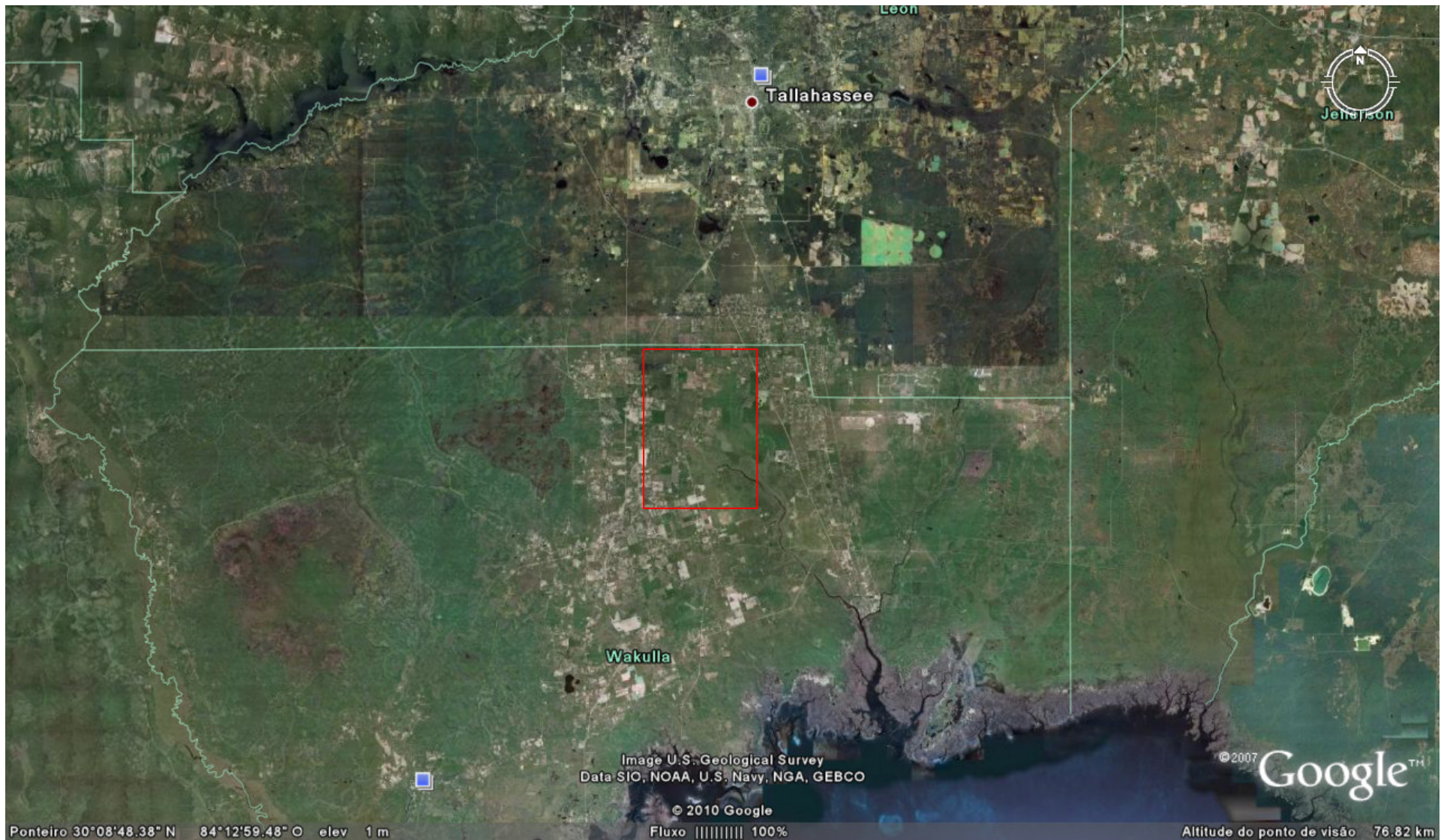


Wakulla



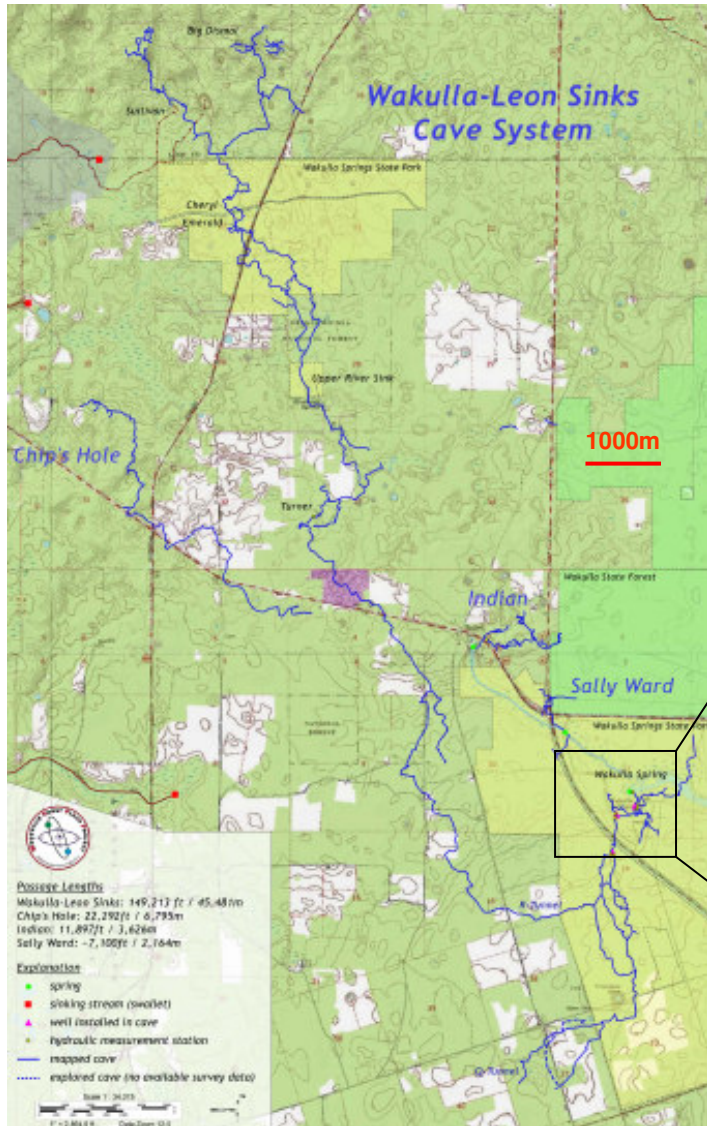


Wakulla

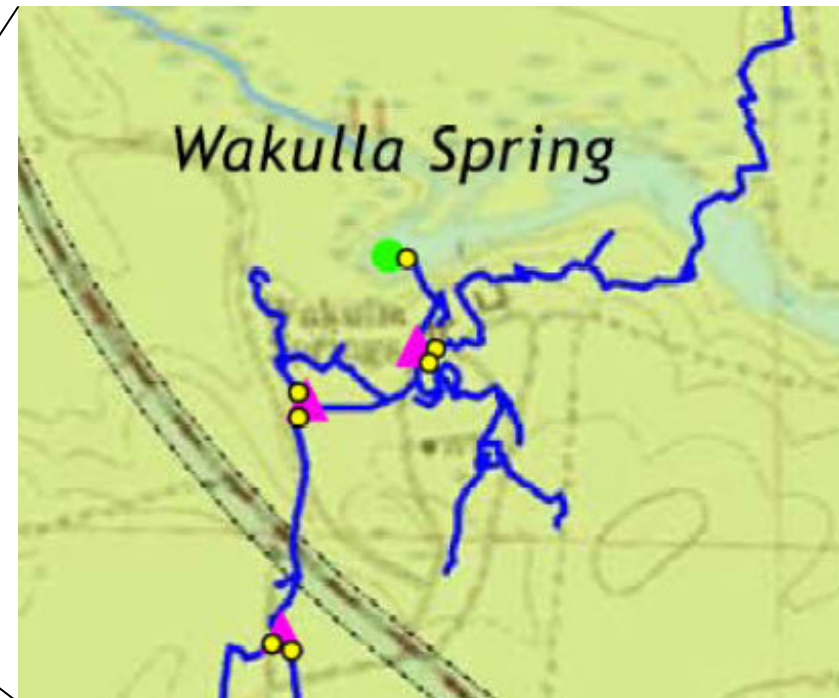




Wakulla



- ▼ 7200m penetração
- ▼ 90m prof média
- ▼ BT:10h + Deco:15h





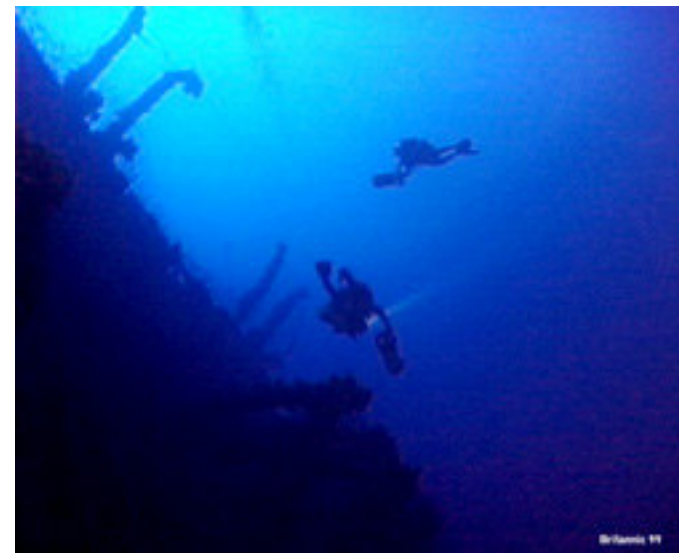
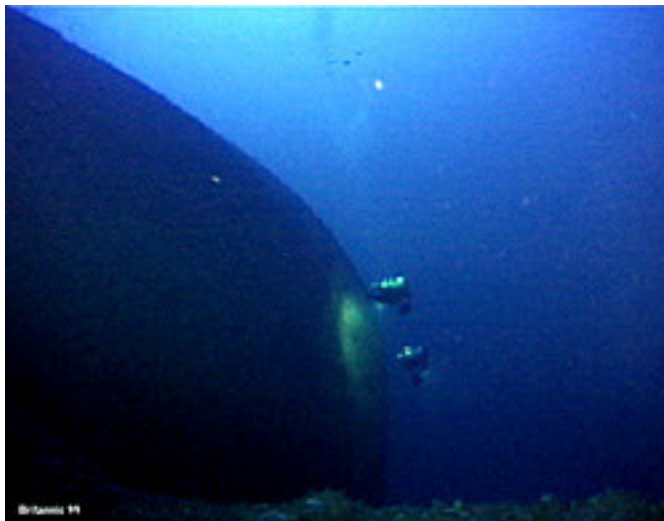
Wakulla





HMS Britannic 1999

- ▼ Circuito Aberto
- ▼ 120m prof
- ▼ BT : 15-25 min





D. Rhea



China



D. Rhea



D. Rhea



Conservação





Project Baseline

© Original Artist
Reproduction rights obtainable from
www.CartoonStock.com



search ID: grin171

© Original Artist
Reproduction rights obtainable from
www.CartoonStock.com



search ID: awan265

"REMEMBER BACK IN THE OLD DAYS ...
WHEN WE WERE RETIRED..."



- ▼ Sem fins lucrativos;
- ▼ Certificações com prazo de validade (3 anos), alunos e instrutores;
- ▼ Instrutores 25 mergulhos / ano extra formação;
- ▼ 25 mergulhos experiencia entre cursos;
- ▼ 100% Controlo de Qualidade;
- ▼ Não fumadores;
- ▼ Requisitos de *fitness*;
- ▼ Baseado em Standards (configuração, gases, procedimentos)

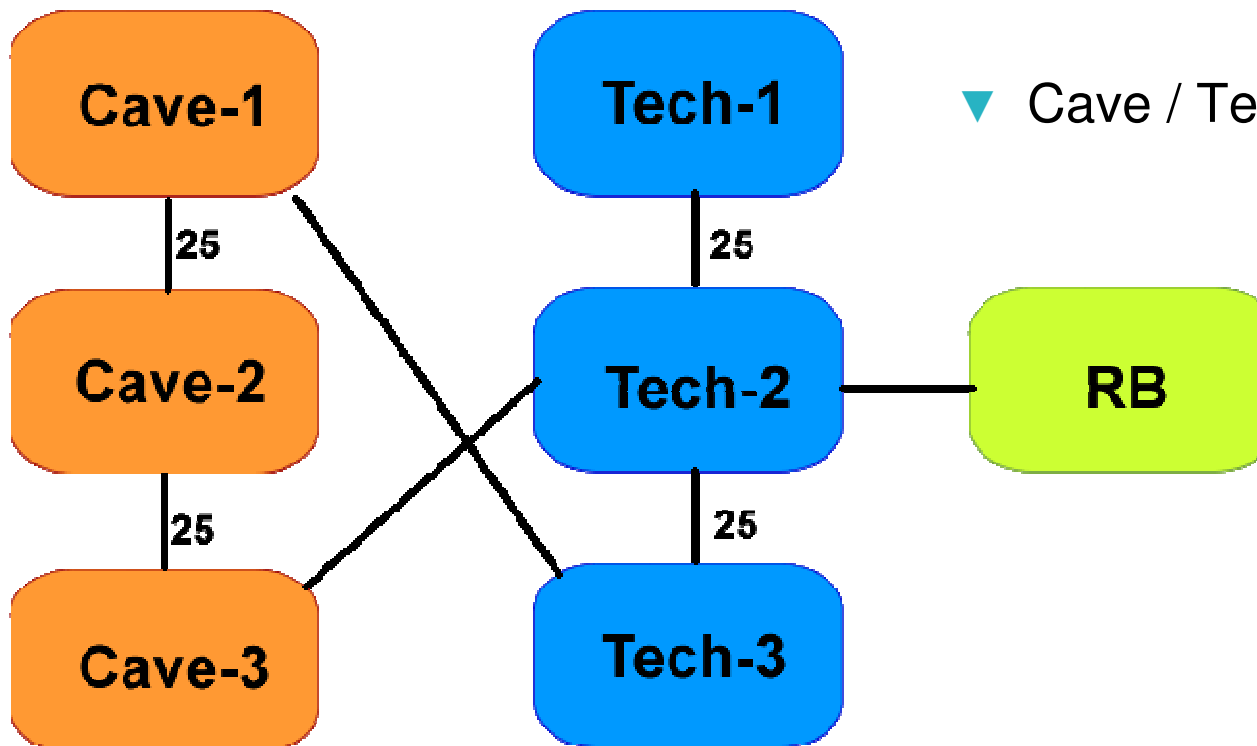


Estrutura

"OW"

Fundamentals

- ▼ OW : 8 a 10 dias, 10+10 mergulhos
- ▼ Fundies : 4 dias, 5 mergulhos



- ▼ Cave / Tech : 5 dias



Resultado na Água

Flutuabilidade
Trim

Controle
Equilíbrio



Competência

Awareness

Conforto

Kicks

Confiança



Objectivos da GUE

- ▼ Desenvolver procedimentos e standards globais capaz de suportar mergulhos extremos (exploração);
- ▼ Desenvolver os mais exigentes e rigorosos programas de formação;
- ▼ Construir uma base internacional de mergulhadores, investigadores e formadores;
- ▼ Desenvolver projectos de exploração, conservação e investigação.



GUE em Portugal



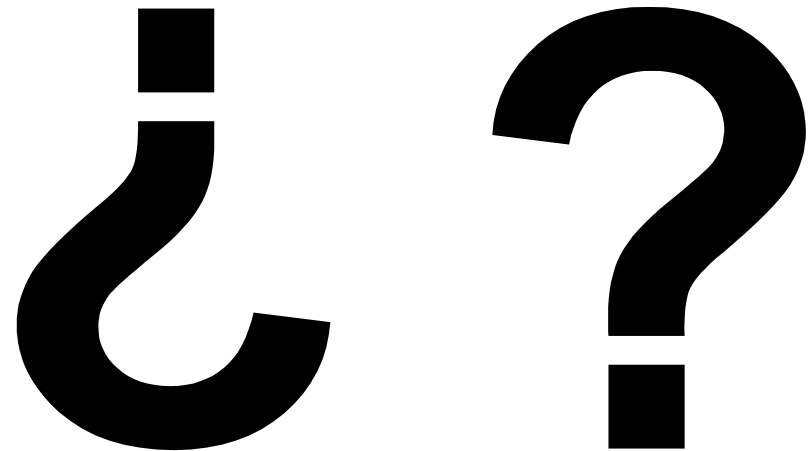
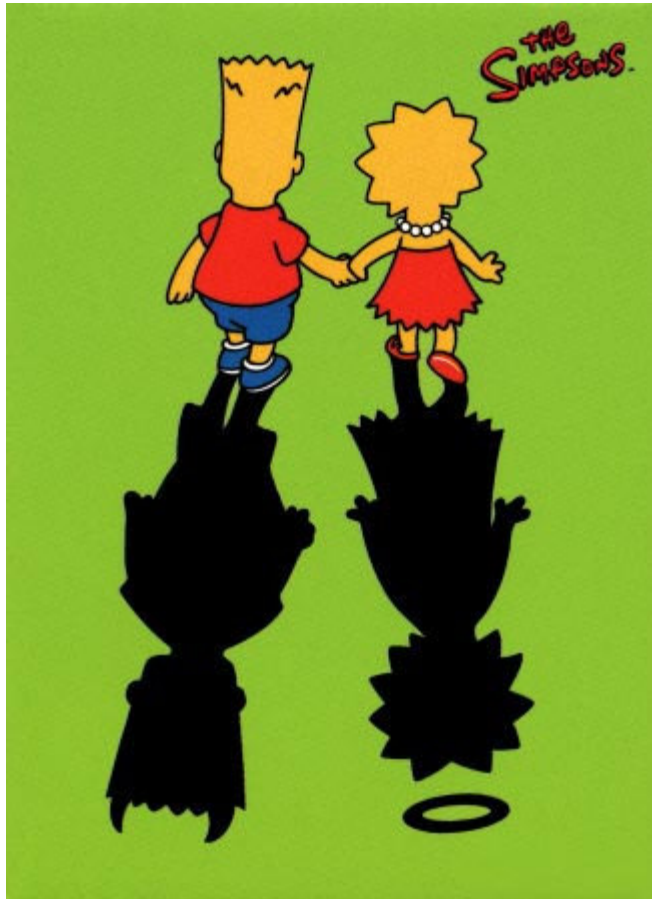


Projectos GUE em Portugal





Questões / Debate





Créditos / Agradecimentos

Mais info : ricardo@entrada.tv

OBRIGADO

Fotografias & Figuras : allposters.com, GoogleEarth, GUE, OceanDiscovery, CartoonStock,